

F=200 Camera Sensor Diagonal MS-200-TCD33 series

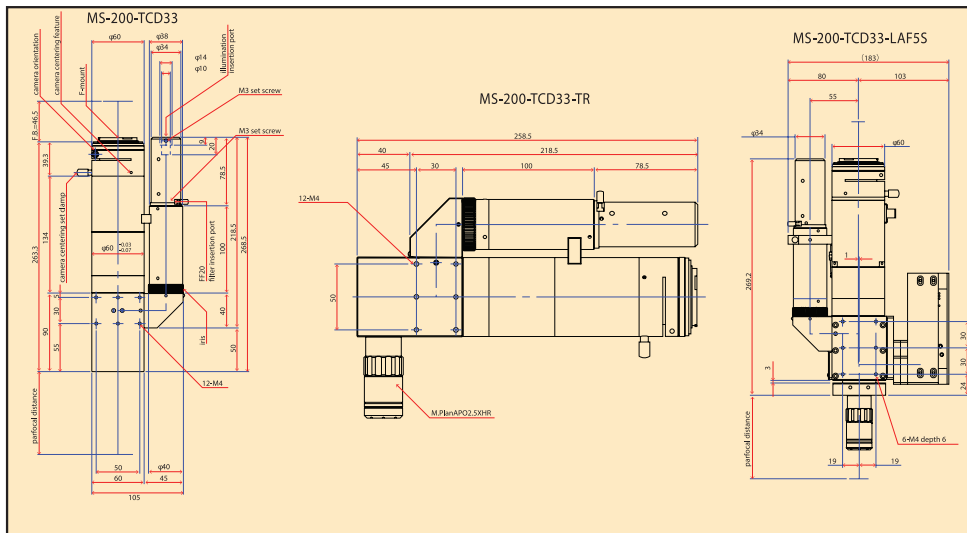


MS-200-TCD33/MS-200TCD33-TR/MSTCD33-LAF5S

Wide FOV Camera Microscope unit

f=200mm Camera sensor diagonal 33mm available

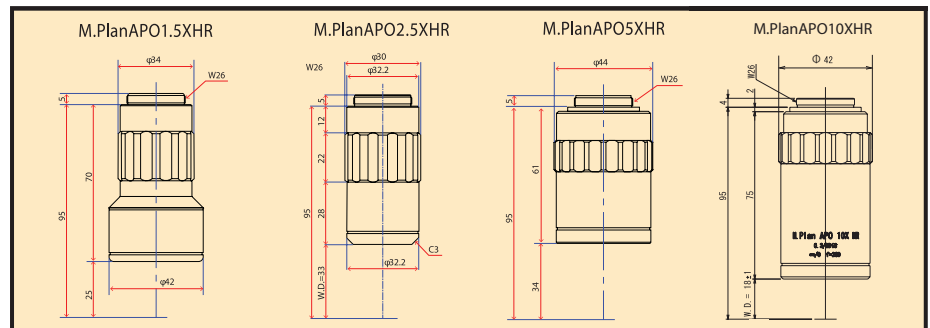
Infinity (f=200mm) F-mount lens tube for 12 megapixel camera (5.5micron, 4096x3072) 25 megapixels camera (4.5micron, 5120 x5120) *Camera mount can be changed. Provides high magnification, wide FOV, high resolution images. This customizable series is ideal for installation in high-end equipment system.



M.Plan APO HR Series

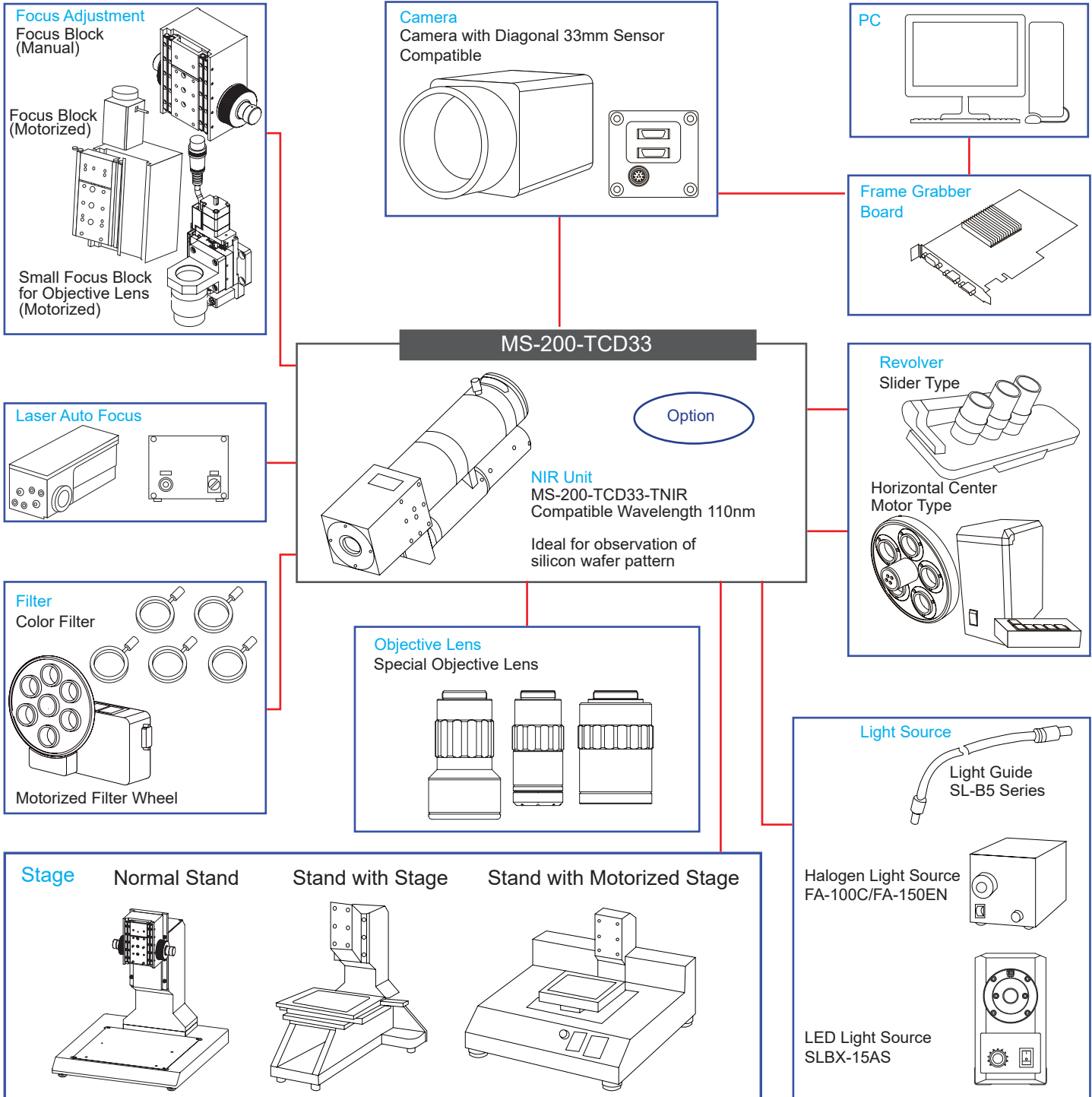
Wide FOV Image circle 33mm Long WD Objective lens

Special objective lens for MS-200-TCD33. Parfocal distance 95mm. By mounting turret, possible to switch magnification.



Model	M.Plan APO 1.5XHR	M.Plan APO 2.5XHR	M.Plan APO 5XHR	M.Plan APO 10XHR
Magnification	1.5X	2.5X	5X	10X
Working Distance	25mm	33mm	34mm	18mm
Focal Distance	133.38mm	80mm	40mm	20mm
NA	0.048	0.08	0.16	0.3
Resolution	7.4um	4.2um	2.1um	1.2um
Focal Depth	119.3um	42.9um	10.7um	3.0um
Weight	390g	180g	385g	570g

DATA: MS-200-TCD33 Series System Diagram



Seiwa Optical America Inc

3000 Scott Blvd,#203
Santa Clara, CA 95054

Tel : +408-844-8008

Fax : +408-844-8944

E-mail: info@seiwaamerica.com

http://www.seiwaamerica.com