

1.5M Pixel CCD

1.3M Pixel CMOS

ARTRAY

HDMI Digital Monitor Output Camera

Splendidly High Quality

1.5M Pixel CCD Camera

MODEL : ARTCAM-150P4-HDMI

SPECIFICATION

- Internal USB2.0 interface
- SXGA 12~18FPS
- Taking 10bit image function
* Only when you use SDK
- SDK(DLL)
- 1.5M Pixel CCD sensor
- Color / Monochrome
- HDMI (High Definition Multimedia Interface) Ver1.2

- Sensor : 1.5M Pixel CCD
- Active Pixels : 1392 (H) × 1040 (V)
- Active Imager Size : 4.65μm × 4.65μm

- Transfer Method : Progressive Scan
- Shutter Type : Global Shutter
- Lens Mount : C Mount
- Output : USB2.0 (8 or 10bit digital output)
HDMI Ver1.2 1080p@60
- USB Standard : USB2.0 Bulk transfer, Streaming output
- Size : 50mm(W) × 56mm(H) × 75mm(D)
- Power Supply : +5V 1.5A outlet
- Running Temperature : 0°C ~ 35°C (Recommended),
Humidity Under 80% (No Condensation)

Recommended OS : WINDOWS XP
 Recommended PC : Over ICH4 Southbridge
 CPU : Pentium4 Over 1.7GHz
 (Need internal USB2.0 port)
 Memory : Over 512MB
 Included : Device Driver, Viewer Software, 5V AC Adapter
 1.8m USB cable
 Optional : C Mount Lens, HDMI Monitor,
 3m / 5m HDMI Cable, SDK

1.3M Pixel CMOS Camera

MODEL : ARTCAM-130MI-HDMI

SPECIFICATION

- Internal USB2.0 interface
- SXGA 15FPS
- Taking 10bit image function
* Only when you use SDK
- SDK(DLL)
- 1.3M Pixel CMOS sensor
- Color / Monochrome
- HDMI (High Definition Multimedia Interface) Ver1.2

- Sensor : 1.3M Pixel CMOS
- Active Pixels : 1280 (H) × 1024 (V)
- Active Imager Size : 5.2μm × 5.2μm

- Transfer Method : Progressive Scan
- Shutter Type : Rolling Shutter
- Lens Mount : C Mount
- Output : USB2.0 (8 or 10bit digital output)
HDMI Ver1.2 1080p@60
- USB Standard : USB2.0 Bulk transfer, Streaming output
- Size : 50mm(W) × 56mm(H) × 75mm(D)
- Power Supply : +5V 1A outlet
- Running Temperature : 0°C ~ 35°C (Recommended),
Humidity Under 80% (No Condensation)

Recommended OS : WINDOWS XP
 Recommended PC : Over ICH4 Southbridge
 CPU : Pentium4 Over 1.7GHz
 (Need internal USB2.0 port)
 Memory : Over 512MB
 Included : Device Driver, Viewer Software, 5V AC Adapter
 1.8m USB cable
 Optional : C Mount Lens, HDMI Monitor,
 3m / 5m HDMI Cable, SDK

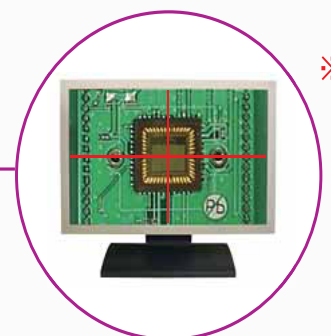
Connect to a LCD or HDMI connector
 and you can see images!
 You don't need PC to see images!



Connect to PC



Connect to HDMI monitor



※ Cross cursor is equipped



Trademark No. TUV100/104 01 0310